

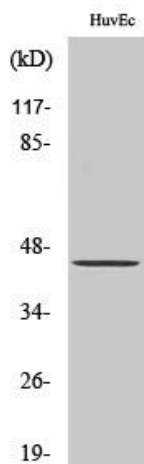


FAM80A Polyclonal Antibody

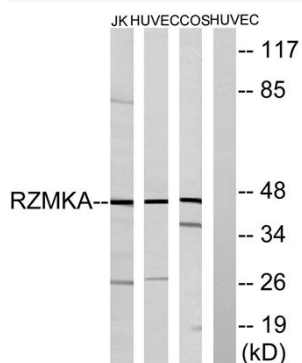
Catalog No	YP-Ab-16413
Isotype	IgG
Reactivity	Human;Mouse;Monkey
Applications	WB;ELISA
Gene Name	RIMKLA
Protein Name	N-acetylaspartyl-glutamate synthetase A
Immunogen	The antiserum was produced against synthesized peptide derived from human RIMKA. AA range:112-161
Specificity	FAM80A Polyclonal Antibody detects endogenous levels of FAM80A protein.
Formulation	Liquid in PBS containing 50% glycerol, 0.5% BSA and 0.02% sodium azide.
Source	Polyclonal, Rabbit,IgG
Purification	The antibody was affinity-purified from rabbit antiserum by affinity-chromatography using epitope-specific immunogen.
Dilution	Western Blot: 1/500 - 1/2000. ELISA: 1/20000. Not yet tested in other applications.
Concentration	1 mg/ml
Purity	≥90%
Storage Stability	-20°C/1 year
Synonyms	RIMKLA; FAM80A; N-acetylaspartyl-glutamate synthetase A; NAAG synthetase A; NAAGS; Ribosomal protein S6 modification-like protein A
Observed Band	43kD
Cell Pathway	Cytoplasm .
Tissue Specificity	Pancreas,
Function	cofactor: Binds 2 manganese ions per subunit.,similarity: Belongs to the rimK family.,similarity: Contains 1 ATP-grasp domain.,
Background	cofactor: Binds 2 manganese ions per subunit.,similarity: Belongs to the rimK family.,similarity: Contains 1 ATP-grasp domain.,
matters needing attention	Avoid repeated freezing and thawing!
Usage suggestions	This product can be used in immunological reaction related experiments. For more information, please consult technical personnel.



Products Images



Western Blot analysis of various cells using FAM80A Polyclonal Antibody



Western blot analysis of lysates from HUVEC, COS, and Jurkat cells, using RIMKA Antibody. The lane on the right is blocked with the synthesized peptide.